



# 2024-2025 Placement Briefing

## Elderly Service Setting (ES)

Prepared by Edith Fung Siu Ha  
23 November, 2023

Knowing you .....

\* how many of you thinking of choosing ES in one of the 2 placement choices?

\* what are the thoughts you have about ES placement?

白花油味。。

好悶，好慢，  
好SAD。。

手工藝，懷舊。。



# Today's Agenda

Give you a reason – Why ES ?

What will you experience in the ES placement ?

What are the key considerations & Requirements?

Q&A

## Why ES?

# United Nations

## Trends in Population Ageing

Globally, the population aged 65 and over is growing faster than all other age groups.

According to data from World Population Prospects: the 2019 Revision, by 2050, one in six people in the world will be over age 65 (16%), up from one in 11 in 2019 (9%). By 2050, one in four persons living in Europe and Northern America could be aged 65 or over. In 2018, for the first time in history, persons aged 65 or above outnumbered children under five years of age globally. The number of persons aged 80 years or over is projected to triple, from 143 million in 2019 to 426 million in 2050.

## Demographic drivers of population ageing

The size and age composition of a population are determined jointly by three demographic processes: fertility, mortality and migration.

## Why ES?

# World Health Organization

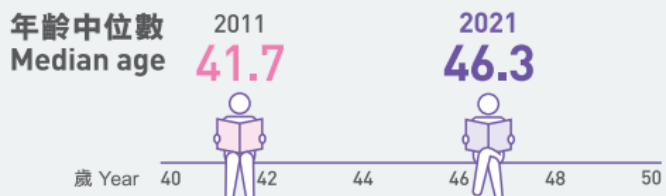
1 October 2022

## Key facts

- All countries face major challenges to ensure that their health and social systems are ready to make the most of this demographic shift.
- In 2050, 80% of older people will be living in low- and middle-income countries.
- The pace of population ageing is much faster than in the past.
- In 2020, the number of people aged 60 years and older outnumbered children younger than 5 years.
- Between 2015 and 2050, the proportion of the world's population over 60 years will nearly double from 12% to 22%.

# Population Census Key Statistics 2021 人口普查 主要統計

## Hong Kong



人口

### 人口數目及年齡結構 Population and age structure

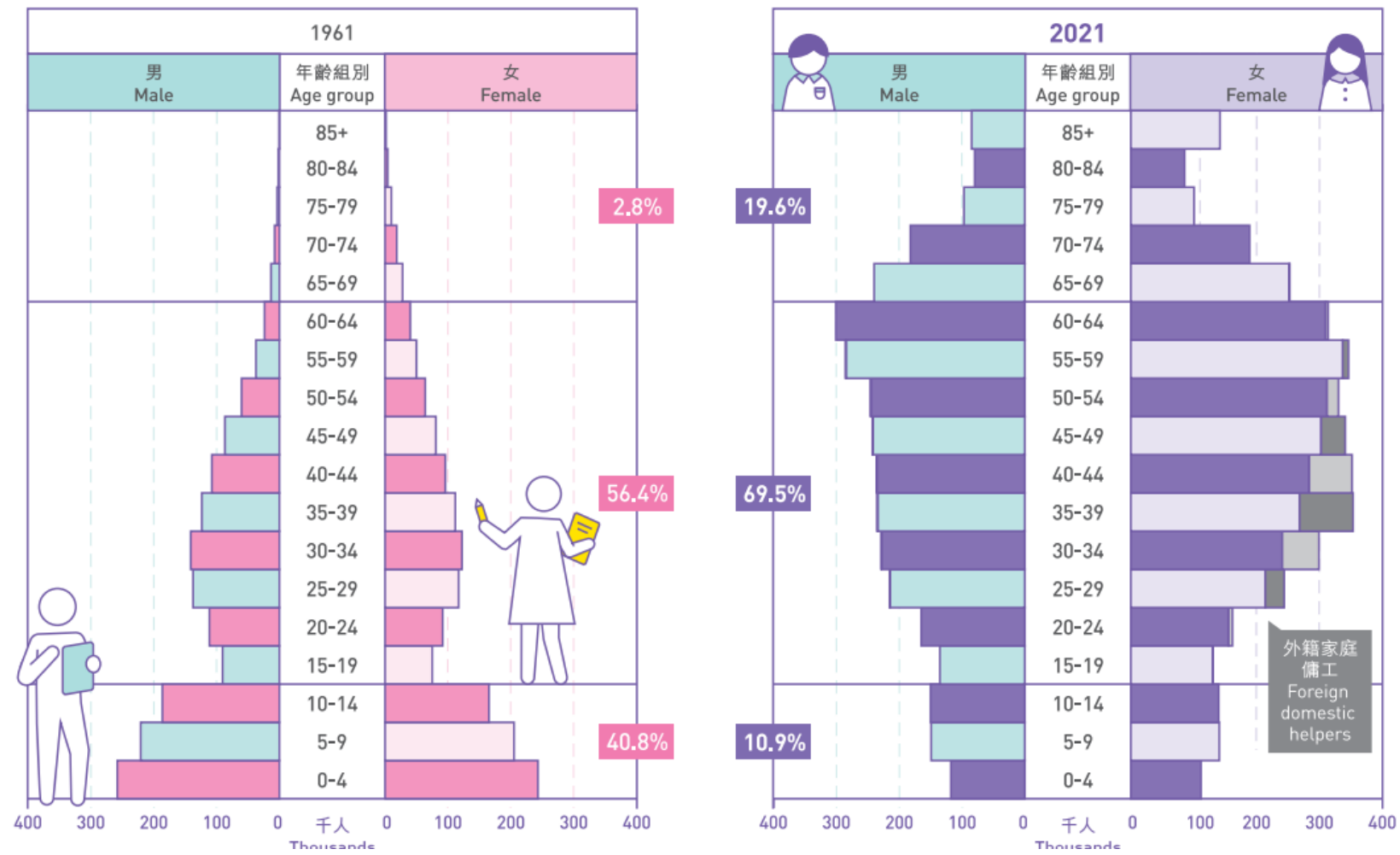




# Hong Kong

## Population Pyramid 1961 vs 2021

1961 年及 2021 年的人口<sup>(1)</sup>金字塔  
Population<sup>(1)</sup> pyramids, 1961 and 2021



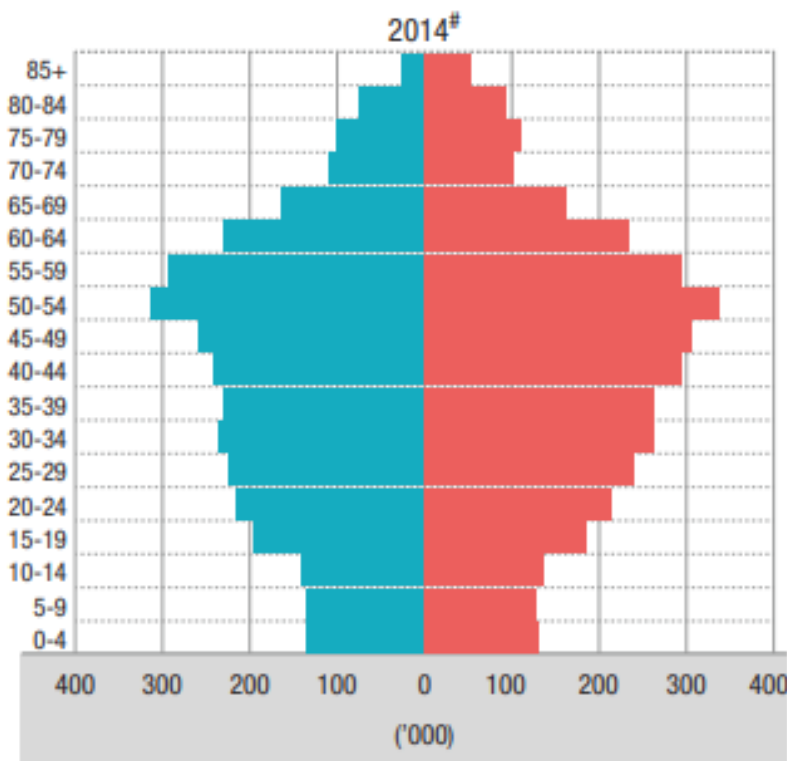


## Hong Kong

### Population Pyramid

#### 2014 VS 2041

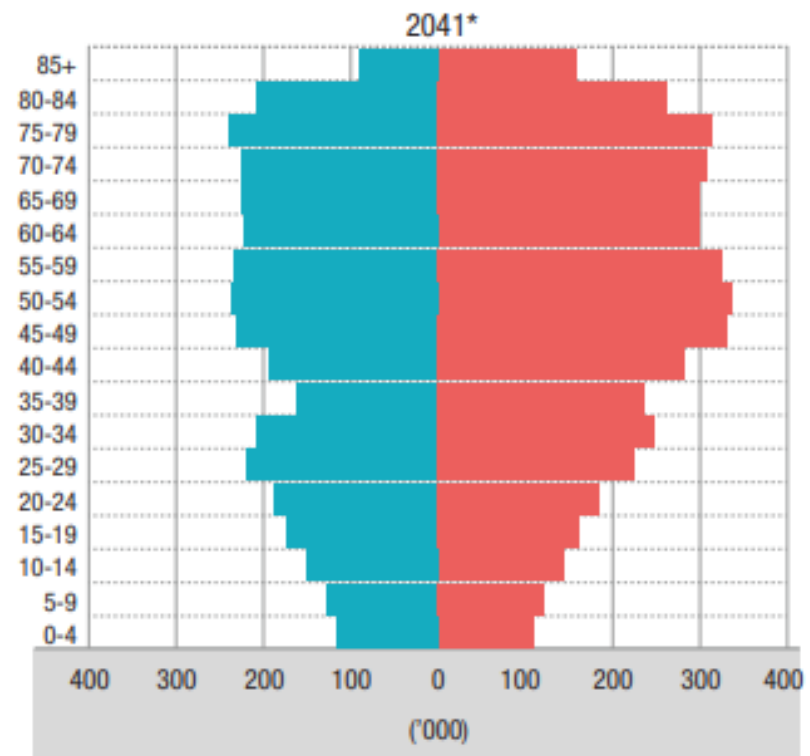
Diagram 2: The inverted population pyramid in 2041



# Provisional figures

\* Projected figures

Source: Demographic Statistics Section, Census and Statistics Department



Male Female





## Hong Kong

### Demographic Challenges

Hong Kong is facing a number of significant demographic challenges. An ageing population will lower our labour force participation rate. In the past three decades, our economy has grown by an average of 4.1% per year. Of this, about 1% was due to a growth in the labour force while the other 3% was from productivity gain. Insufficient labour will slow down economic growth. On the other hand, an ageing population will increase the expenditure of healthcare and elderly welfare and services. Slower economic growth coupled with increased expenditure will affect the sustainability of public finances.

Hong Kong's future will be shaped by our ability to respond to these challenges. We completed a community engagement exercise in early 2014 to help our people to better understand the challenges and gauge public views for mapping our strategies and initiatives to address these challenges.



Government expenditure on the elderly

RT02/19-20  
13 December 2019

## 1. Introduction

1.1 Hong Kong's population has been ageing fast in recent years as a result of lower fertility rate and higher life expectancy. Amid population ageing, caring for the elderly has been a key Government policy objective. Recurrent expenditure on three major service areas – elderly care, medical/health care services, and financial assistance – accounts for an estimated HK\$91.9 billion or 20.8% of the total government expenditure<sup>1</sup> in 2019-2020 ([Table](#)). The estimated amount represents an average

**Table – Recurrent government expenditure on the elderly by major service area (HK\$ million)**

	2012-2013 (actual)	2013-2014 (actual)	2014-2015 (actual)	2015-2016 (actual)	2016-2017 (actual)	2017-2018 (actual)	2018-2019 (revised estimate)	2019-2020 (estimate)	Annual average growth
<b>1. Elderly care</b>	<b>4,748.0</b>	<b>5,178.7</b>	<b>5,999.5</b>	<b>6,592.0</b>	<b>7,022.1</b>	<b>7,345.8</b>	<b>8,307.3</b>	<b>10,235.6</b>	<b>11.6%</b>
- Community care and support	1,529.0	1,606.1	1,875.0	2,172.1	2,300.6	2,364.6	2,690.3	3,314.6	11.7%
- Residential care	3,062.8	3,409.5	3,952.9	4,243.7	4,538.8	4,793.9	5,424.6	6,714.1	11.9%
- Transitional care <sup>(a)</sup>	156.2	163.1	171.6	176.2	182.7	187.3	192.4	206.9	4.1%

Source: <https://www.legco.gov.hk/research-publications/english/192orto2-government-expenditure-on-the-elderly-20191213-e.pdf>

# Hong Kong

## The 2023-24 Budget Speech

### Support Ageing in Place

176. The Government provides the elderly with various types of care and support services at the community level to help them age in place. In addition to the provision of services such as personal care, nursing care and rehabilitation exercises at day care centres and homes of the elderly, we will regularise the Pilot Scheme on Community Care Service Voucher for the Elderly in the third quarter of this year and increase the number of beneficiaries from the current 8 000 to 12 000 in 2025-26, involving an annual recurrent expenditure of about \$900 million. The Government will also set up 16 new neighbourhood elderly centres in the next five years and expand the service scope of a total of over 200 district elderly community centres and neighbourhood elderly centres in the fourth quarter of this year to cover retirement planning and promotion of gerontechnology.

177. The Government is also concerned about the post-treatment care and rehabilitation needs of elderly persons. The Hospital Authority's Integrated Discharge Support Programme for Elderly Patients offers six to eight weeks of support services for discharged elderly patients with a higher risk, which include rehabilitation exercises, meal services, environmental risk assessments and recommendations on home modifications, in order to facilitate their recovery at home and reduce their re-admission risk. The Government will expand the programme starting from the third quarter of this year by increasing the number of beneficiaries from about 33 000 to 45 000 per annum, and the number of beneficiaries who can be referred to receive home support services will increase from about 9 000 to 11 000. This measure will involve an annual recurrent expenditure of about \$74 million.

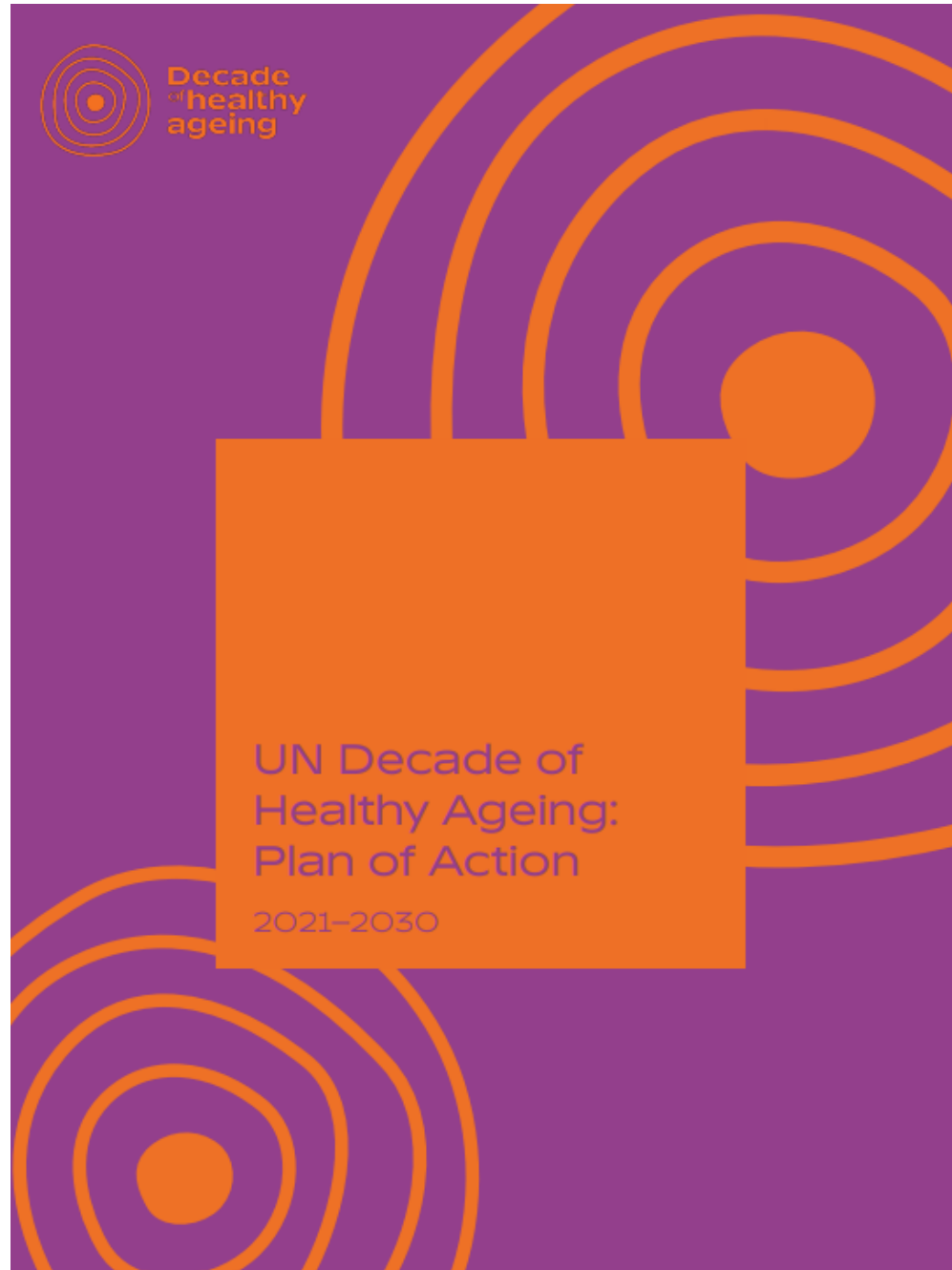
危機

Danger

Opportunity

It will **increase demand for primary health care and long-term care**, require **a larger and better trained workforce** and intensify the need for environments to be made more age-friendly.

# UN Decade of Healthy Ageing 2021 - 2030





# UN Decade of Healthy Ageing 2021 - 2030

## What is WHO's role in the UN Decade of Healthy Ageing?

The United Nations Decade of Healthy Ageing (2021–2030) is a global collaboration, aligned with the last ten years of the Sustainable Development Goals, to improve the lives of older people, their families, and the communities in which they live. The World Health Organization was asked to lead the implementation of the Decade in collaboration with the other UN organizations and serves as the Decade Secretariat. Governments, international and regional organizations, civil society, the private sector, academia and the media are encouraged to actively contribute to achieving the Decade's goals through direct action, partnering with others, and by participating in the [Healthy Ageing Collaborative](#).





# Hong Kong

## (Elderly Commission 安老事務委員會)

### 《安老服務計劃方案》建議哪些服務發展方向？

#### 土地和設施規劃



重訂安老服務設施規劃比率

#### 人手和培訓



加強安老服務的人手規劃和培訓

#### 財政可持續性



讓安老服務的財政長遠可持續

#### 服務提升



提升服務內容和質素，支援居家安老

# Hong Kong

2014

香港中文大學  
賽馬會老年學研究所

1999

香港大學  
秀圃老年研究中心

1998

嶺南大學  
亞太老年學研究中心

2010

香港理工大學  
活齡學院

# Social Enterprises

## Project Futurus

We believe that the key to **social innovation** is to see and feel the world with empathy.

We are committed to creating an age positive and **supportive environment for the aged through education, advocacy and product & service innovation.**

We hope to transform aged care and reimagine the future of aging .

# Social Enterprises / Self-finance services

尊賢會  
(The Jade Club)

<https://www.thejadeclub.com.hk/>

銀杏館  
(Ginkgo House)

<https://www.gingkohouse.hk/blank-3>

基督教香港信義會社會  
服務部「金齡薈」

[https://service.elchk.org.hk/unit\\_service3.php?center=76](https://service.elchk.org.hk/unit_service3.php?center=76)

仁愛堂田家炳銅鑼  
灣長者活動中心

<https://se5.yot.org.hk>

## Projects

JC Joyage  
2016 – present

### **Jockey Club Holistic Support Project for Elderly Mental Wellness** 賽馬會樂齡同行計劃樂齡友里樂齡之友身心健康行動計劃

The project aims to enhance the community capacity in older adults mental support, promote effective coordination among district elderly services and community mental health services, improve service access and coverage for older adults in need, and exert positive influence on families and the neighbourhood to improve mental health literacy.

## Projects

### JC Age– friendly City 2015 – present

## Jockey Club Age-friendly City 香港賽馬會 長者及年齡友善城市

### **Objectives:**

- Assess the age-friendliness of each district and build momentum in developing an age-friendly community
- Recommend a framework for districts to undertake continual improvement for the well-being of senior citizens
- Arouse public awareness and encourage community participation in building an age-friendly city



Projects

賽馬會50+共創豐盛計劃

以「創業」為平台，  
50+在過程中加深認識社會需要，  
共同發揮個人專長和專業知識，  
發展以「社會創新」為理念的項目服務  
社會大眾；  
同時協助50+探索方向，為人生下半場帶來更多機遇和選擇。

## SWD –

### 「老有所為活動計劃」

Through subsidising various social service organisations, district organisations, and educational institutes, etc., to carry out a wide range of programmes, the 'Opportunities for the Elderly Project' (OEP)

The pilot scheme was implemented from february 2018 to the end of january 2021, and will be extended for 32 months from february 2021 to the end of september 2023.

The theme of 2022-24 is "**Promote Well-Being through Connecting the Generations**", which is to encourage the elderly to take an active part in a variety of community activities so that they may **unleash their potentials and apply their new knowledge and skills to serving and contributing to the community**, thereby living their life to the fullest, promote the spirit of care and mutual help, and foster social harmony to ensure that the elderly enjoy their golden years.

Source:

[https://www.swd.gov.hk/en/pubsvc/elderly/cat\\_commsupp/opportunit/#:~:text=Through%20subsidising%20various%20social%20service,unleash%20their%20potentials%2C%20further%20their](https://www.swd.gov.hk/en/pubsvc/elderly/cat_commsupp/opportunit/#:~:text=Through%20subsidising%20various%20social%20service,unleash%20their%20potentials%2C%20further%20their)

# Projects

the Pilot Scheme on  
Support for Elderly  
Persons  
Discharged from Public  
Hospitals after  
Treatment

支援在公立醫院接受治療後離院的長者試驗計劃

## SWD regularises the Pilot Scheme starting from January 2023

# Projects

智友醫社同行計劃

**Dementia  
Community  
Support Scheme**

To provide support services to elderly persons with mild or moderate dementia and their carers through a **medical-social collaboration** model

DECCs will arrange activities and services for participants according to their individual care plans and individual needs with a view to enhancing/improving their cognitive functions, knowledge of home safety, ability of self-care, physical functioning, social skills, and alleviate carers' burden etc.

The pilot scheme has been regularised since February 2019 and expanded to all 41 DECCs and 7 HA clusters in the territory in 2019-20.

# Annual Events

## **The Gerontech and Innovation Expo cum Summit (GIES)**

Jointly hosted by the HKSAR Government and the Hong Kong Council of Social Service, and co-organised with the Hong Kong Science and Technology Parks Corporation, is the largest gerontechnology public education event in Hong Kong.

<https://gies.hk/en>

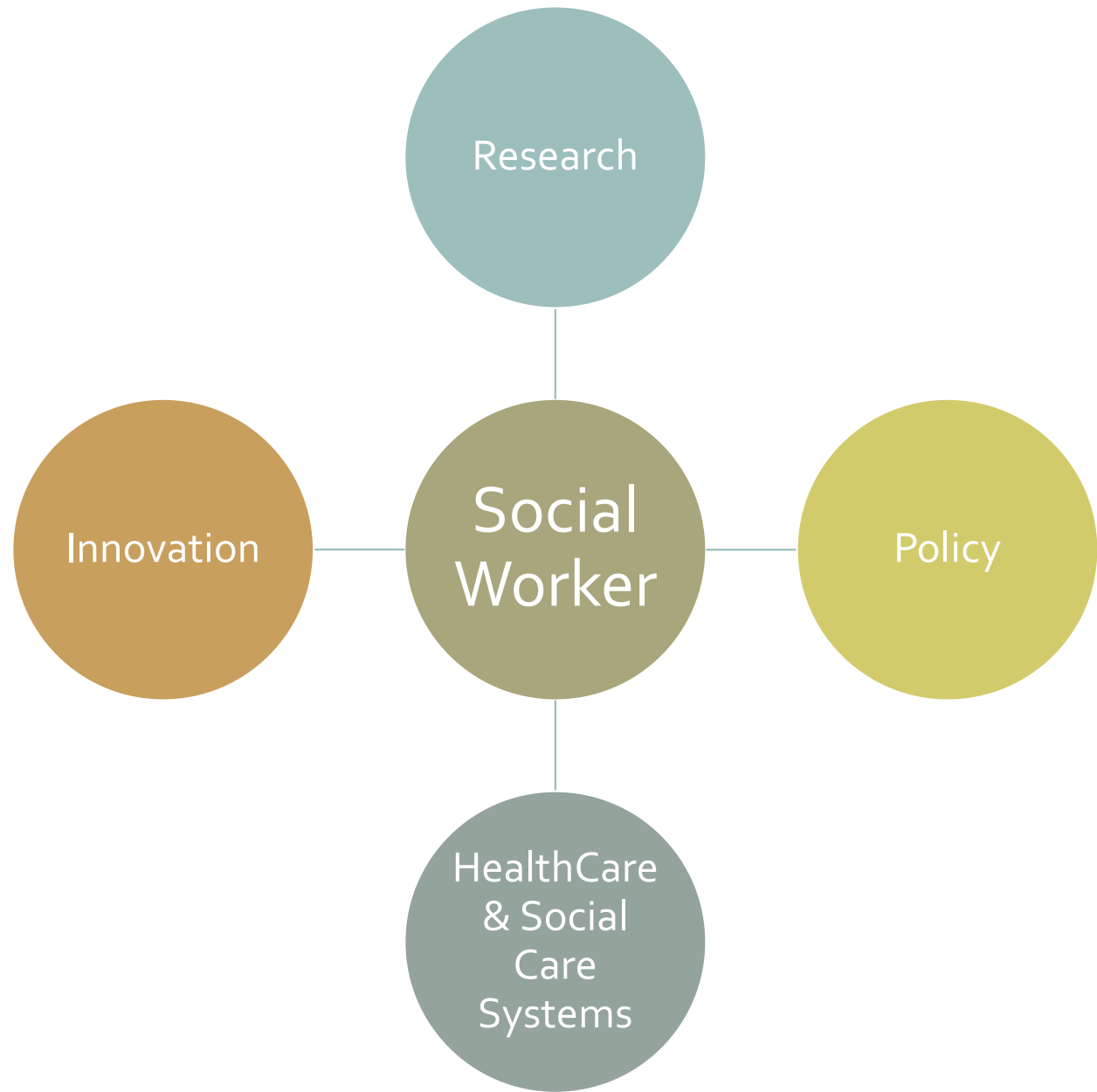
## **Golden Age Expo and Summit (GAES)**

Launched in 2016, GAES has instigated the development of numerous activities related to ageing. The event strives to inspire the golden age community to become a new driving force for social innovation.

The all-in-one event exhibits the latest technology, innovative products and services in the ageing industry, and gathers local and international influential thinkers and leaders from various sectors to share innovative ideas and experiences on ageing.

<https://goldenage.foundation/en/gaes2023>

# The answers to Why ES?





What are the experiences?

## You will learn the CONCEPTS OF CARE

- ✓ Continuum of Care
- ✓ Ageing in Place
- ✓ Social & Health Integration Approach in the Care for the Aged
- ✓ “Successful Ageing”; “Healthy Ageing” or “Smart Ageing”; Creative Ageing
- ✓ “Positive Ageing”
- ✓ “Holistic Health”
- ✓ “Quality of Life of Older Adults”
- ✓ “Person-centered Care (VIPS)”

# You will know the Elderly & the community resources supporting ageing

- Understand the needs and characteristics of the elders and learn about the related social/community resources to support them

What are the experiences?

Spectrum of needs of elderly



## You will learn to apply skills and social work knowledge to work with different groups of the elders

What are the experiences?

- the retirees
- the singleton
- doubleton elderly
- the elderly living with different long-term illnesses e.g. Dementia; Parkinson's Disease; Stroke; Cancer; mental illnesses – Depression and Anxiety and to work with the caregivers.
- Crisis related knowledge – e.g. bereavement/ Elderly suicide / suspected Elderly abuse

## You will expose to practice of multi-disciplinary care approach

- working with other healthcare professionals such as nurse; occupational therapist; physiotherapist; dietitian; music therapist etc

What are the experiences?

# Subvented Services

## Residential Care Services

- Care and Attention Homes for the elderly (C&A Homes)
- Nursing Homes (NH)
- Enhanced Bought Place Scheme
- Pilot Scheme on Residential Care Service Voucher for the Elderly (RCSV)

## Community Care Services

### Elderly centre services

DECC / NEC / STE / SE

### Community Care Services

Day Care Centers / IHC / EHCCS

Other support services

What are the experiences?

Cases, Groups, Programs

## Residential Home

- Target: elders who assessed to be of moderate impairment and require daily personal care and attention.
- Provide residential care, meals, personal care and limited nursing care

## Social Worker Roles:

- Administration duties
- Social Care Groupwork, case and program
- Work as a bridge between the home and the family members
- Support care team to address the social care needs of the residents

Click the link to learn more about residential home services from SWD

[https://www.swd.gov.hk/en/pubsvc/elderly/cat\\_residentcare/index.html](https://www.swd.gov.hk/en/pubsvc/elderly/cat_residentcare/index.html)



## Residential Homes

### Methods of Work:

\* Residential Home-Based

\* Some community event

- **Mainly Mon to Fri duties**
- **Working Hours: 9:00 am – 5:00/6:00 pm**
- **Saturday duty can only be arranged upon discussion with OIC** due to a lack of support from Agency social worker on Saturdays.
- Sometimes weekend duties for programs/events.
- **Need to fit the routines of the homes e.g. the meal times and the nap/sleeping times**
- **Placement hours at night or on weekend is not a norm** due to the routine of the elderly and the work schedule of the multi-disciplinary team.

- For **Part-time students**: Please note that it is not a norm for placement students to work in night shift. You are also recommended **to stay flexible to commit work during weekdays** as most of staff meetings and client social welfare services are arranged during the office hours.

## District Elderly Community Centre (DECC)

## Neighbourhood Elderly Center (NEC)

A community support service to provide a range of comprehensive services to enable elderly persons to remain in the community, to lead a healthy, respectful and dignified life and to enhance their positive and contributing role to the society

Social Worker works with the elderly and the caregivers through :

### Methods of Work:

- \* CENTER –BASED : groupwork, program
- \* HOME VISIT
- \* COMMUNITY OUTREACH

Click the link before to learn more of the services from SWD

[https://www.swd.gov.hk/en/pubsvc/elderly/cat\\_commsupp/elderly\\_centres/](https://www.swd.gov.hk/en/pubsvc/elderly/cat_commsupp/elderly_centres/)

District Elderly  
Community Centre (DECC)

Neighbourhood Elderly  
Center (NEC)

- **Mainly Mon to Fri duties (8:30am/9 am to 5/6 pm)**
- **Saturday duty possible in NEC/DECC, however, with less supervision support from social workers.**
- Sometimes weekend duties for programs/ events.
- Casework, groupwork and program

**Scope of Services:**

- **Educational & Developmental (e.g. volunteer development)**
- **Social Activities**
- **Counselling**
- **Supports for the Elderly (STE)**
- **Caregiver Supports**
- **Integrated Home Care Services**
- **Enhanced Home and Community Services**

# Casework

- Case management for referrals of tangible services (LTC case)
- Carer Stress and Support (Needy Carers and Ordinary Carers)
- Long term care due to Health issues: Dementia/Cancer/Stroke
- Family relationship
- Bereavement
- Depression
- Risk of Social Isolation

## Groupwork

- **Developmental group:**

Positive Aging, Volunteer training, Social relationship, GrandParenting, life and death....

- **Therapeutic Group:**

Cognitive Stimulation; Chronic Pain, Insomnia, Depression....

- **Carer Support Group:**

Stroke, Dementia...

Needy Carer  
Support  
Group

## Groupwork

**耆樂·身心靈**  
**有需要護老者支援小組**

 **了解**  
認知障礙症

 **學習**  
健康快樂  
的秘訣

 **分享**  
照顧經驗

耆樂·共聚	16/11/2020	上午	8:30-9:30
耆樂·快樂	23/11/2020	上午	8:30-9:30
耆樂·感恩	30/11/2020	上午	8:30-9:30
耆樂·樂觀	07/12/2020	下午	2:00-3:00
耆樂·自賞	14/12/2020	下午	2:00-3:00
耆樂·再會	21/12/2020	下午	2:00-3:00

**共6節，逢週一**  
**在曲尺閣，不見不散！**

# Groupwork

Psychoeducational  
mutual support group –  
PERMA of Positive  
Psychology

快樂，你有得揀！



覺察能力



抗逆能力



正向思考



自信心



快樂，你有得揀！

第二節

工作紙1：壓力溫度計

姓名：\_\_\_\_\_  
性別：\_\_\_\_\_  
年齡：\_\_\_\_\_



請你為每天的壓力指數填上顏色。

2020-11-24 (星期二)	☆	☆	☆	☆	☆
2020-11-25 (星期三)	☆	☆	☆	☆	☆
2020-11-26 (星期四)	☆	☆	☆	☆	☆
2020-11-27 (星期五)	☆	☆	☆	☆	☆
2020-11-28 (星期六)	☆	☆	☆	☆	☆
2020-11-29 (星期日)	☆	☆	☆	☆	☆
2020-11-30 (星期一)	☆	☆	☆	☆	☆



# Groupwork

## 「快樂掌門人」正向生活小組



充實自己

快樂生活

樂觀積極

積極人生

「老友記」進入人生下半場，要怎樣規劃及運用才能擁有更積極，精彩的生活？正向心理學強調使用五大元素（正向情緒、全心投入、正向人際、生命意義、成就感）建構個人生活，讓組員以正能量使人生變得更快樂，有意義。

# Groupwork

最緊要玩得開心 😊

# 樂活330

## 整全健康小組

遊戲      藝術創作

學習身心靈健康

養生運動      呼吸練習      與情緒共處

日期： 2020 年 12 月 23、30 日 (三)  
2021 年 1 月 6、13、20、27 日 (三)  
(共 6 節)

時間： 下午 3:00 - 4:00

地點： 中心雅悅

費用： 全免

負責實習學生：



# Program

- Caregivers Appreciation
- Festive seasons celebration
- End of Life Information
- Boardgame
- Family Photo Day
- Volunteer Service Day
- Drama Theatre
- Elderly Welfare Services Information
- Elderly Friendly Community
- Mental Health – Human Library



# Work Skills/Knowledge

---

- Coordination skills
- Team work spirit
- Multi-disciplinary cooperation
- Health Issues Faced by the Elderly e.g. Dementia / Stroke
- Good understanding of variety of elderly services and community resources
- Knowledge about Grief and Loss; Bereavement.....



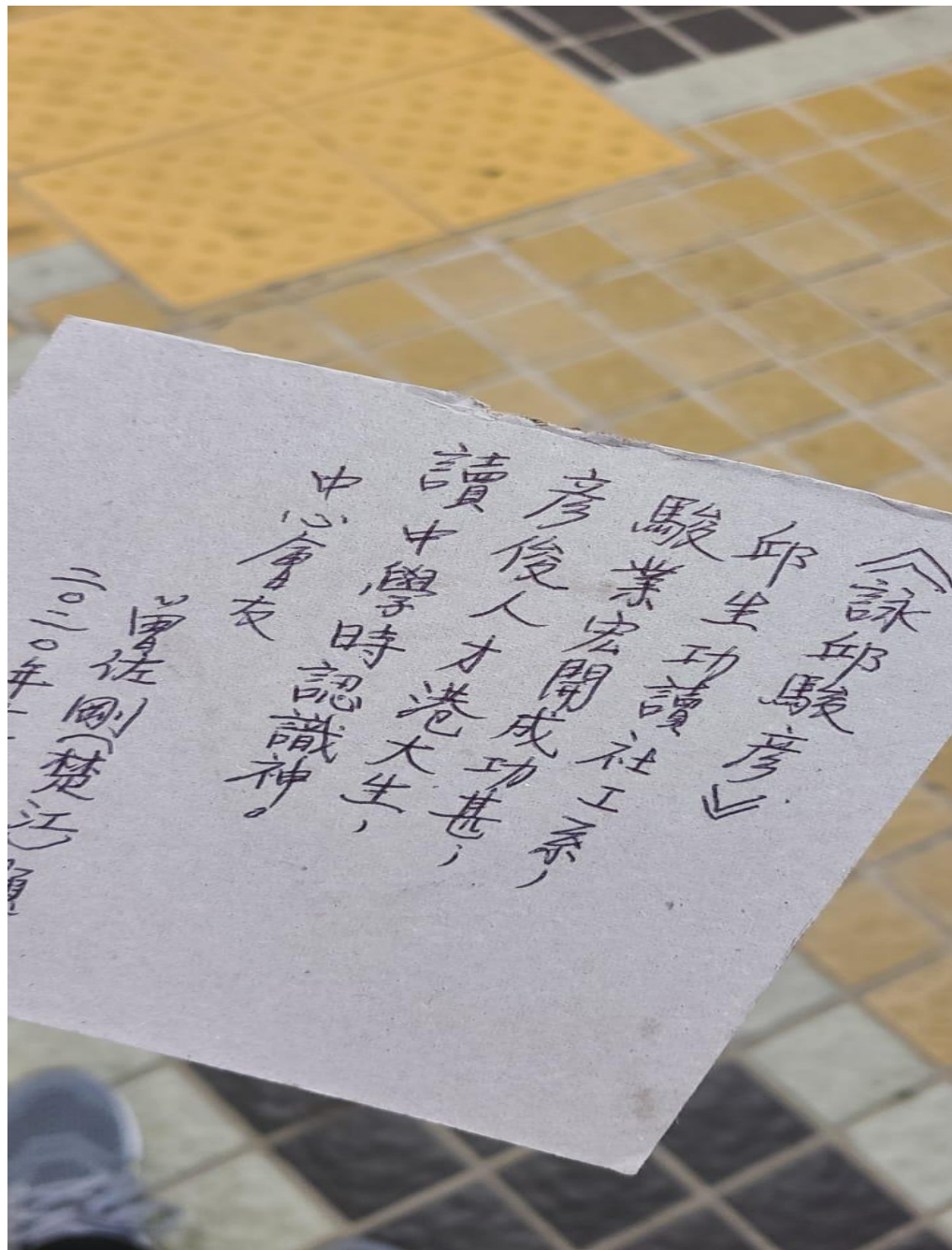
# Attitude

---

- Curiosity & Be Open
- Self-Initiative to learn from different teams
- Patient
- Positive
- Polite, Respect and Care
- Punctuality
- Self-discipline with good time and workload management
- Flexible and willing to shoulder additional duties



# Student's Story in ES placement



Alex Cheung

MSW-FT

1<sup>st</sup> : ICYSC

2<sup>nd</sup> : DECC



對長者服務印象完全改觀. 以前覺得長者服務好悶, 原本咁多元化

50+ 好好玩, 他們係 Contributors, 有好多發揮. 當義工去解釋 HEALTH REPORT 同可以帶康樂運動小組. 跟他們學到很多

醫社合作,  
大開眼界

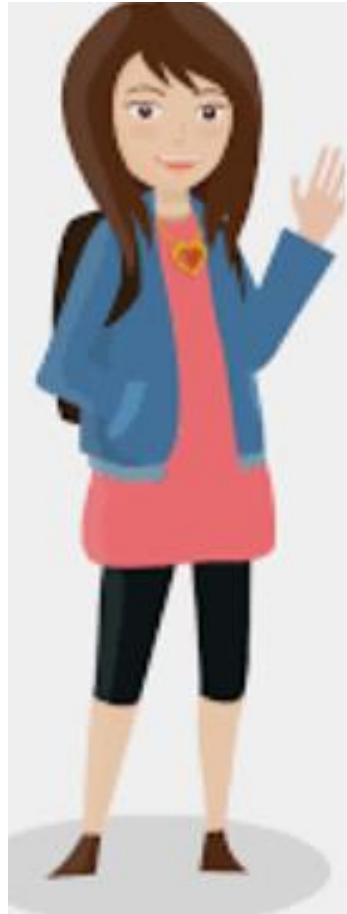


Sharon Law

MSW-FT

1<sup>st</sup> : Rehab

2<sup>nd</sup> : DECC



好豐富嘅體驗

\*50 Plus,

- active ageing
- 基層醫療
- 醫社合作

好多新潮活動

\* Soft Volleyball

\*Singing Bowl

\*電競: 傳說對決

大學學嘅可以應用

Groupwork

Casework

Program

Casework可以做家

訪；用family

perspective and

system perspective

去介入。



# Thank You !

---

For Enquiry:

□ Email : [edith828@hku.hk](mailto:edith828@hku.hk)

□ Office Tel: 3917 4110

□ Office: CJT-554

Elderly Service Setting Coordinator :

EDITH FUNG SIU HA